

GUN POSITION 4 SOP

RANGE DESCRIPTION

Gun Position 4 is an active, artillery live-fire range located at Grid 83806480. It is accessible from MCB 643 Road.

Primary Uses: Indirect fire in support of The Basic School (TBS) call for fire training.

Alternate uses: None

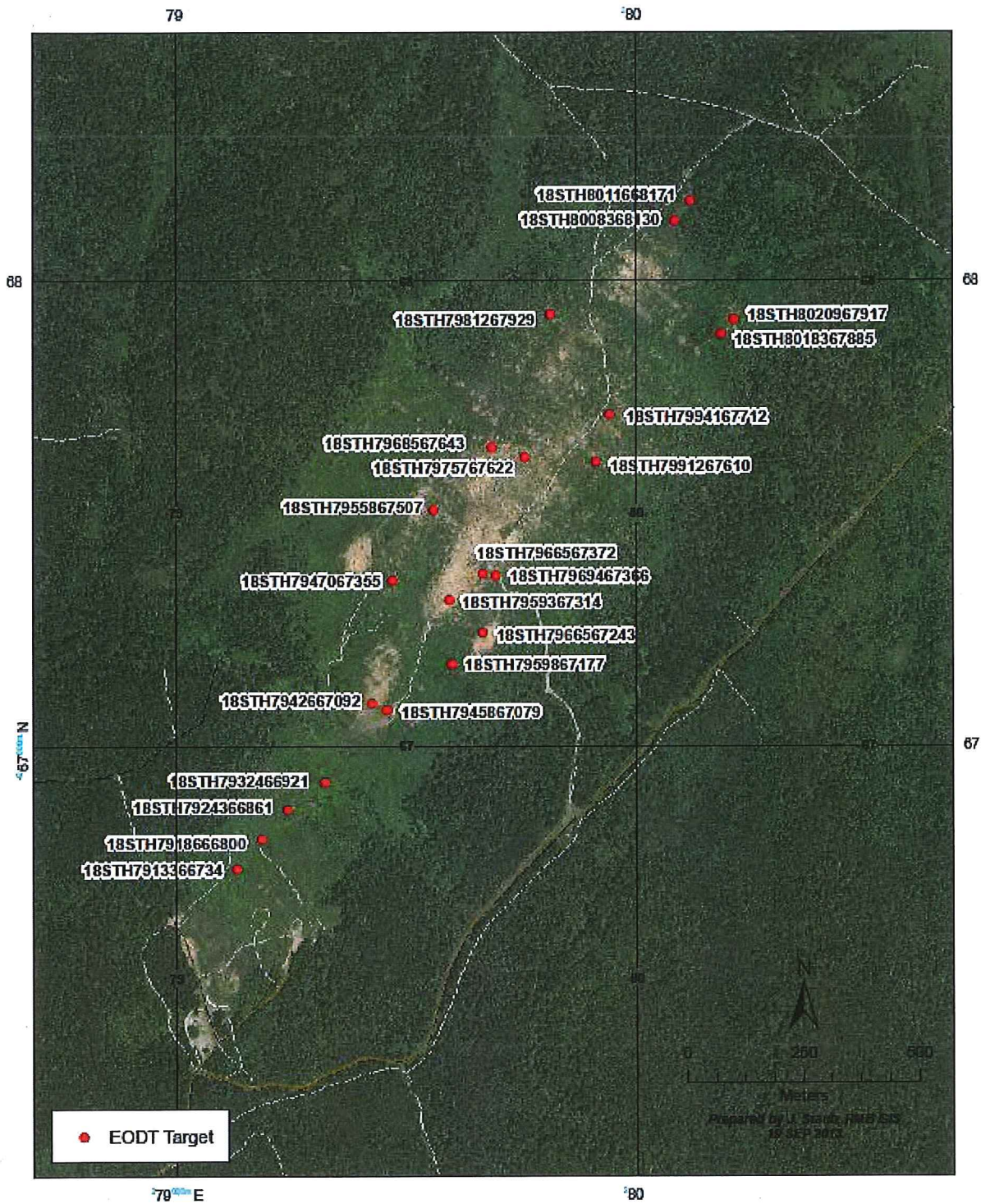
Number Firing Points: 4

GUN POSITION 4



RANGE 7 TARGETS

RANGE 7 - EODT TARGETS
MCB Quantico, VA



WEAPONS ACCOMMODATED

-M777A2 Howitzer
-120mm EFSS

AMMUNITION AUTHORIZED

-155mm HE/ILLUM/SMOKE/WP (No M825 in low angle)
-120mm EFSS (Certified 'cleared for overhead fire')

TARGET AREA BOX:

UP LEFT-18STH7937367479 UP RIGHT-18STH8010468257
LOW LEFT-18STH7959067142 LOW RIGHT-18STH8025967830
**TARGETS ARE INSIDE THIS BOX

TARGET DESCRIPTIONS AND LOCATIONS:

ALL TARGETS ARE 1 1/2 INCH STEEL EODT

<u>GRID:</u>	<u>ELEV:</u>	
18STH7959867177	326.28'	FAR SOUTH TARGET (LEFT)
18STH7966567243	352.13'	
18STH7959367314	335.89'	
18STH7947067355	357.18'	
18STH7969467366	367.68'	
18STH7966567372	364.8'	
18STH7955867507	374.61'	
18STH7975767622	383.96'	
18STH7991267610	386.71'	
18STH7968567643	388.68'	
18STH7994167712	393.93'	
18STH7981267929	410.04'	
18STH8018367885	374.24'	AMIP 7
18STH8020967917	393.44'	AMIP 7
18STH8008368130	415.39'	AMIP 8
18STH8011668171	414.66'	AMIP 8 FAR NORTH TARGET (RIGHT)

PRIMARY DIRECTION OF FIRE:

MAGNETIC-5600 GRID-5450

DIRECTION LIMITS:

MAGNETIC	GRID
LEFT: 5510	LEFT: 5360
RIGHT: 5690	RIGHT: 5540

PROBABLE ERRORS RANGE AND DEFLECTION:

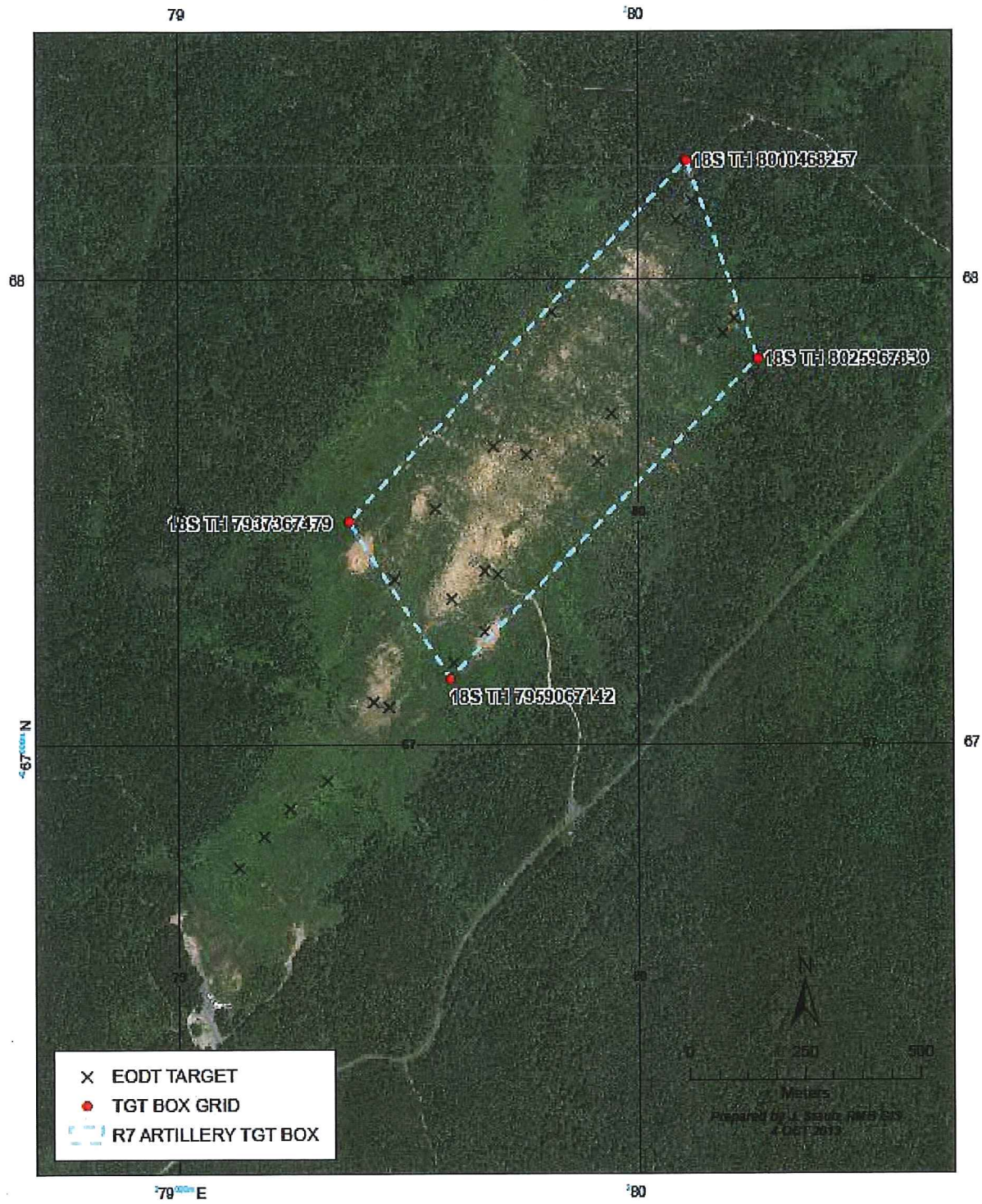
TFT 155-AR-2 TABLE G CHARGE 1L RANGE 5500
RANGE 19 METERS DEFLECTION 3 METERS
12 PER = 228 METERS, 8 PER = 152 METERS, 5 PED = 15 METERS

TFT 155-AM-3-TABLE G CHARGE 1L RANGE 5500
RANGE 19 METERS DEFLECTION 4 METERS
12 PER = 228 METERS, 8 PER = 152 METERS, 5 PED = 20 METERS

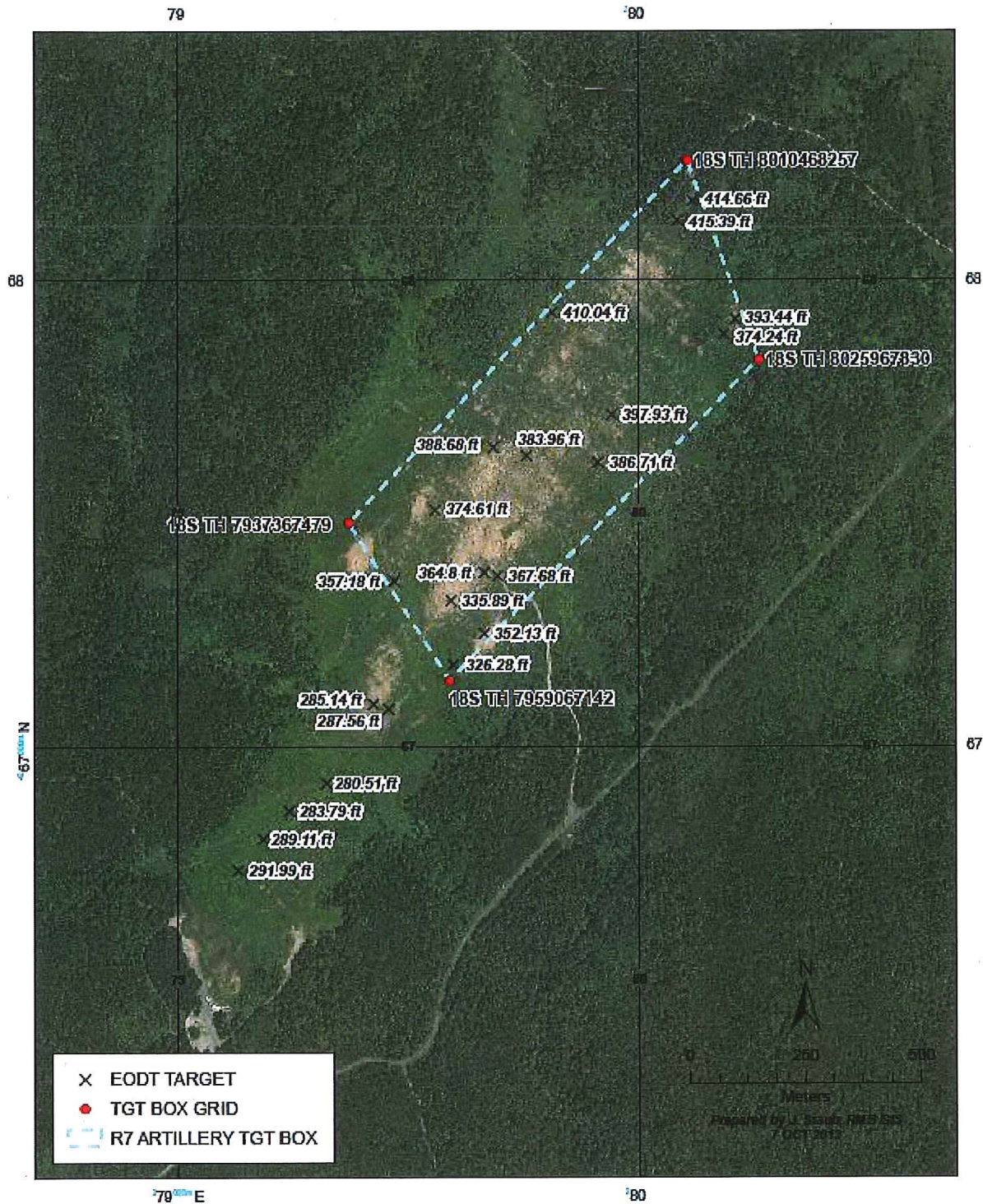
MIN RANGE: 4670 M MAX RANGE: 5450

PRIMARY DIRECTION OF FIRE. Northwest

RANGE 7 ARTILLERY TARGET BOX MCB Quantico, VA



RANGE 7 ARTILLERY TARGET BOX
MCB Quantico, VA



RANGE USE RESTRICTIONS/COMMENTS.

1. The only weapons and ammunition approved for use on this range are listed in this certification. There shall be no deviations from or modifications to the approved weapons and ammunition.
2. The OIC and RSO must be present during firing.

3. All range regulations and SOP's will be adhered to.
4. GP-4 cannot be occupied when Range 3A is firing 7.62, 5.56 and 9mm from bay 4.
5. RT 643A, RT 643B and RT 643FG gates must be locked when GP-4 is hot.
6. Far right mortar position on R-7 cannot be occupied when GP-4 is hot.
7. Only low angle mode and charge 1L authorized.
8. Only ammunition cleared for overhead fire can be fired from the 120mm EFSS.

FACILITIES (Number of Each)

Towers: 0
 Sheds: 1
 Ammo Breakdown: 1
 Parking: Yes/limited
 Description of Other Structures: None

UTILITIES AVAILABLE

Electricity: None
 Lights: None
 Water System: None

INSTALLED COMMUNICATIONS. None

MEASURED DISTANCES

	<u>MILES</u>	<u>MGRS</u>
MT (POL) TBS Distance	3.8	87106390
Rations Distance	4.0	87406374
To ASP Distance	7.8	91256605
EMT/Fire (Fire House 3)	7.1	89606410
Nearest MEDEVAC LZ	0.0	83806480 (GP-4)

LASERS AUTHORIZED. None

AVAILABLE DAYS/HOURS. 350/0500-2259 (Airspace must be scheduled for any other times.

AREA SUITABILITY

<u>Unit Type</u>	<u>Unit Size</u>	<u>Number of Units</u>
ADU	Battery	1 (4 guns)

GEOGRAPHICAL DATA

Access Routes: Route 643 or Route 610
 Soil Type: Dirt
 Terrain Type: Small hills
 Vegetation: Grass/Woodland

COMMUNICATION REQUIREMENTS:

1. A radio check is required immediately upon occupying any portion of the RTA, every 30 minutes in a live fire status and every 3 hours in a non-live fire status.
2. The Range Control Facility (RCF) Fire Desk Net Control call sign is "Range Control". Your call sign is "Range XX" (name of range, training area or facility unit is occupying).
3. The primary RCF Fire Desk Net Control frequencies are: ELMR talk group "RC Safety" (ground) and 323.7 AM UHF (air).
4. The secondary RCF Fire Desk Net Control is telephone, numbers: 703-784-5321 or 5322.
5. OIC/RSO will monitor the RCF primary and secondary Safety Nets at all times. Instant communication is required.
6. Any unit with organic ELMR radios will have their ELMR radios programmed with the "RC Safety" talk group and use those radios as their primary means of communication within the RTA.
7. Units without organic ELMR assets will be issued ELMR radios from RMB upon check-in.
8. Approved Non-ELMR radios are only authorized for internal communication (ground).
9. If the RCF cannot reach a unit within the RTA via primary communication, the unit will be contacted via the secondary means of communication.
10. Upon loss of primary communication the OIC/RSO will initiate a "check fire"/cease training status and will contact the RCF via secondary communication. This communication will be maintained while primary communication is being restored. Units may only resume firing/training once primary communication has been re-established and clearance is granted by the RCF.

INJURY CLASSIFICATIONS:

Injuries are classified into the following categories in order to aid in casualty evacuation from the RTA.

1. ROUTINE. Routine injuries are those injuries that are not threatening to life, limb or eyesight; and conditions or illnesses treatable by medication or procedures available at the base medical facilities.

2. PRIORITY. Priority injuries are those injuries that require immediate medical attention but are not threatening to life, limb, or eyesight if treated promptly.

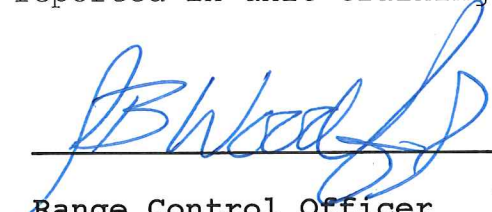
3. URGENT. Urgent injuries are severe injuries that are threatening to life, limb, or eyesight and require immediate medical attention.

4. MASS CASUALTY. A mass casualty is a series of injuries with multiple priority and urgent medical patients.

MEDICAL EVACUATION (MEDEVAC) PROCEDURES:

1. Injury occurs.
2. Range immediately cease-fires.
3. Medical support evaluates/treats injured personnel.
4. Range OIC/RSO notifies the RCF of the injury, is the victim conscious/unconscious and what type of MEDEVAC transportation is requested (ground/air).
5. The OIC/RSO must maintain constant radio contact with Range Control and awaits further instructions.

*Minor injuries and illnesses not requiring medical services need not be reported to the RCF but should be reported in unit training logs.



Range Control Officer

Date: 14 JUNE 16